

LED SCHEME & NATIONAL MANPOWER PLAN

What is LED Scheme?

The LED Scheme will help progressive SMEs to transform and grow in the new manpower-lean landscape. The Ministry of Manpower's (MOM) objective is to support SMEs that want to be pioneers and early adopters of change: becoming more productive, more innovative, and more manpower-lean. This will help create stronger business growth, and offer better jobs and careers to Singaporeans.

How does LED Scheme Work?

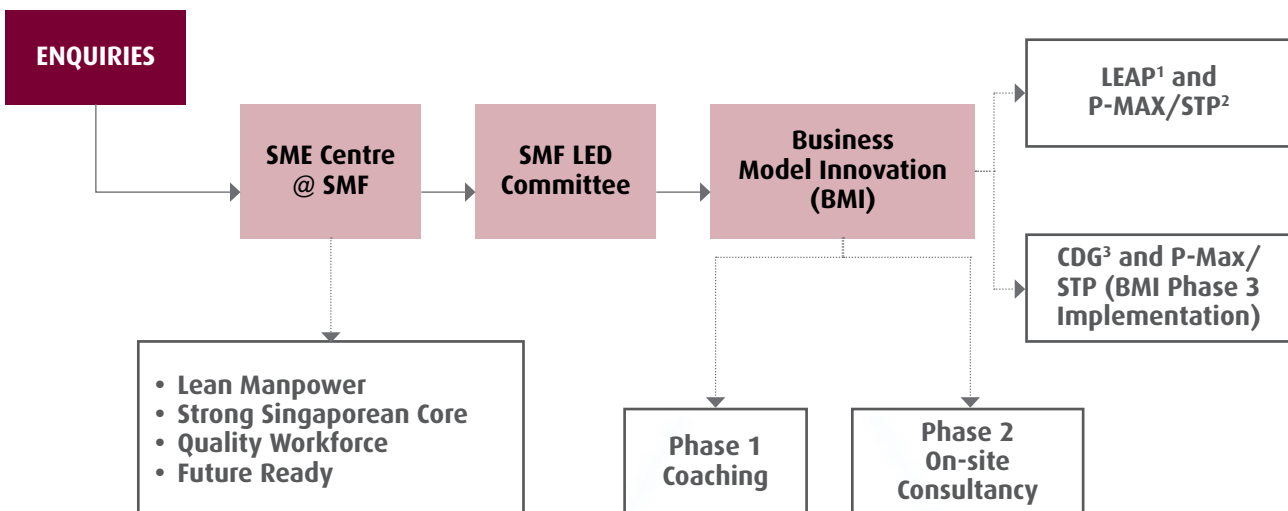
MOM will increase flexibility on how it applies the foreign workers quota and ratios to SMEs undergoing restructuring. Some employers will be allowed to hold on to more of their better-skilled foreign workers temporarily, even as their overall foreign workforce numbers are cut. The LED Scheme will be piloted for two years, starting from 1 October 2015.

How can SMF Help?

SMF can work with your company to carry out the following steps:

Review your business model	To enhance the competitiveness of companies and reduce their dependency on foreign workers.
Identify new business models in your industry clusters	To maintain Singapore companies' competitiveness and be Future Ready.
Bring in local talents	To strengthen and increase the number of Singaporean employees in companies.
Implement LEAN manpower	To increase productivity through LEAN manpower initiatives.

SMF Structured Programmes to Support LED Scheme



For Further Enquires please contact:
Singapore Manufacturing Federation
 2985 Jalan Bukit Merah, Singapore 159457
 Tel: (65) 6826 3100 | Fax: (65) 6826 3113
 Email: enquiry.ccl@smfederation.org.sg
 Website: www.smfcl.sg

¹ Lean Enterprise Accelerated Programme

² SME Talent Programme

³ Capability Development Grant

* **All LED proposals are subject to MOM's approval**